



Pedestal Box/Box/File with Premium Wood Top



Pedestal File/File with Premium Wood Top

Pedestal File Cabinets with Premium Wood Top

Add File and Supply Storage to your Caretta Office

The Pedestal File Cabinets with Premium Wood Top are commercial grade, locking steel file cabinets that are fitted with cherry wood tops. The beautiful hardwood on top of these file cabinets features a bull-nose edge across the front and wood finish that is the same used in other Caretta Workspace products. This makes these file cabinets fit perfectly into a Caretta office.

There are two versions of these file cabinets, a 2 drawer version and a 3 drawer version. One version has two file drawers, while the other has two letter box drawers and a one file drawer.

These high quality file cabinets feature sturdy steel construction, locking drawers and a factory installed counterweight.

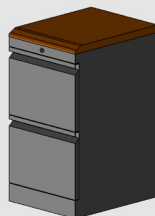
Versions:

File/File with Premium Wood Top:

Part #: 521-0009-00-00-0

Size: H: 29.00" W: 15.31" D: 19.00"

Weight: 75 lbs.



Box/Box/File with Premium Wood Top:

Part #: 521-0008-00-00-0

Size: H: 29.00" W: 15.31" D: 19.00"

Weight: 77 lbs.



There are two versions of pedestal file cabinets. The File/File has 2 file drawers, while the Box/Box/File has 2 letter box drawers and 1 file drawer.

- Adds Office Storage
- 2 Versions
- Sturdy Construction
- Locking Drawers



The cabinets have a secure lock that can be keyed alike, or different from other file cabinets from Caretta.



635 Enterprise Drive
Lewis Center, OH 43035
Phone: 614-430-8660
www.CarettaWorkspace.com
Made in America

Questions? Call Us!
(877) 422-1088

Pedestal File Cabinets with Premium Wood Top: **Features**



Premium Cherry Hardwood Top

The solid cherry hardwood used in the file cabinet top is selected for its unique grain patterns, then finished with a durable, bright, natural cherry finish. Each piece goes through a detailed 10-step finish process, which is perfected with time and hand work.



Sturdy Construction

The all steel, all welded file cabinets meet or exceed applicable ANSI-BIFMA standards for durability and safety. A factory installed counterweight adds stability and security.



Locking Drawers

There are two different drawers on pedestal file cabinets, a 4.5" deep letter box drawer and a 9.5" deep file drawer. The cabinets have a secure lock that can be keyed alike, or different from other Caretta file cabinets. There is a single lock on each cabinet for all drawers.

Pedestal File Cabinets with Premium Wood Top: **Photos**



A Pedestal Box/Box/File Cabinet with a solid cherry wood top.

Companion Products

Companion Products

Pedestal File Cabinets with Premium Wood Top

Pedestal File Cabinets with Premium Wood Top



635 Enterprise Drive
Lewis Center, OH 43035
Phone: 614-430-8660
www.CarettaWorkspace.com
Made in America

Questions? Call Us!
(877)422-1088

Pedestal File Cabinets with Premium Wood Top: **Photos**



A Pedestal File/File Cabinet with a solid cherry wood top.

Companion Products

Companion Products

Pedestal File Cabinets with Premium Wood Top

Pedestal File Cabinets with Premium Wood Top



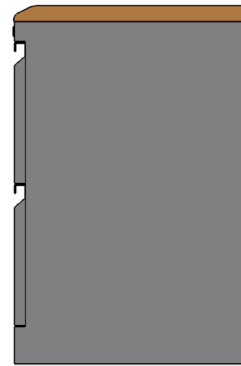
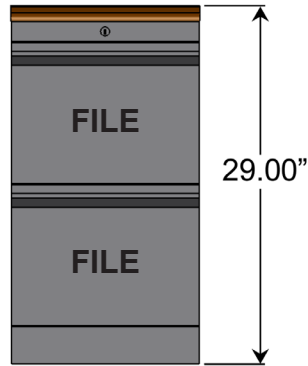
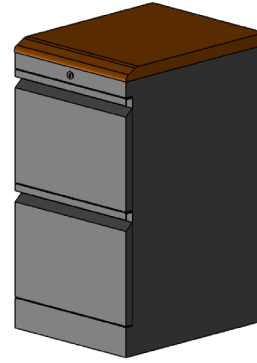
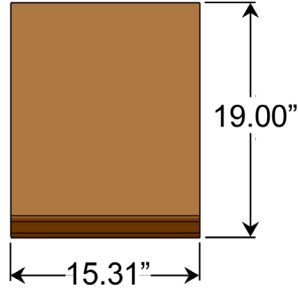
635 Enterprise Drive
Lewis Center, OH 43035
Phone: 614-430-8660
www.CarettaWorkspace.com
Made in America

Questions? Call Us!
(877)422-1088

Pedestal File Cabinets with Premium Wood Top: Dimensions

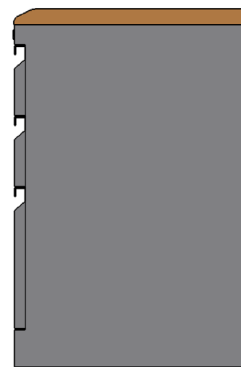
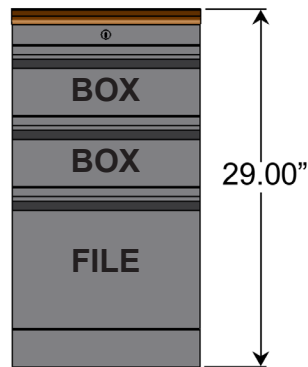
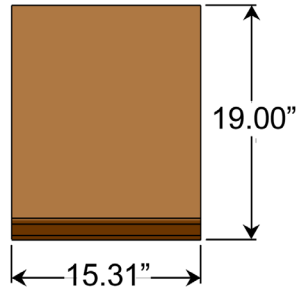
File/File Pedestal File Cabinet with Premium Wood Top:

Part #: 521-0009-00-00-0




Box/Box/File Pedestal File Cabinet with Premium Wood Top:

Part #: 521-0008-00-00-0



635 Enterprise Drive
 Lewis Center, OH 43035
 Phone: 614-430-8660
www.CarettaWorkspace.com
 Made in America

Questions? Call Us!
 (877) 422-1088


Pedestal File Cabinets with Premium Wood Top: Specifications

Part Number:	<ul style="list-style-type: none"> • File/File Pedestal File Cabinet with Premium Wood Top: 521-0009-00-00-0 • Box/Box/File Pedestal File Cabinet with Premium Wood Top: 521-0008-00-00-0
Dimensions:	<ul style="list-style-type: none"> • File/File: H: 29.00" W: 15.31" D: 19.00" • Box/Box/File: H: 29.00" W: 15.31" D: 19.00"
Weight:	<ul style="list-style-type: none"> • File/File: 75 lbs. • Box/Box/File: 77 lbs.
Construction:	<ul style="list-style-type: none"> • Meets or exceeds applicable ANSI-BIFMA standards for durability and safety • Slides include "anti-rebound" and "quick disconnect" features • Drawer fronts include rubber bumpers for quiet operation • Full front drawer pulls (consult factory for other pull options) • Welded steel frame construction and formed channels ensure strength in key areas • Factory installed counterweight • Fully enclosed file cabinet top
Metal:	<ul style="list-style-type: none"> • Top and side channels are 18 – 21 gauge cold rolled steel • Outer panels and drawer bin are 22 gauge steel • Drawer fronts are 20 gauge steel • Black powder coated paint (consult factory for other color options)
Solid Hardwood:	<ul style="list-style-type: none"> • Premium solid cherry hardwood frame • Hand selected for unique grain patterns • Wood source is FSC Certified • CNC manufacturing ensures precision fit joinery
Wood Finish:	<ul style="list-style-type: none"> • Natural cherry finish highlights wood grain • Hand-rubbed, 10-step finish process ensures quality • Meets or exceeds Standards of National Kitchen Cabinet Mfg. Association • Low VOC, formaldehyde free • Hand work in finish process ensures high quality
Drawer Load Capacity:	<ul style="list-style-type: none"> • 6" (4.5" deep) letter box drawer: 50 lbs. • 12" (9.5" deep) file drawer: 70 lbs.
Locks:	<ul style="list-style-type: none"> • File cabinet locks are keyed randomly • For multiple file cabinet orders, specify if you would like them keyed alike
Assembly:	<ul style="list-style-type: none"> • Free standing cabinet with solid metal top • Wood cap securely attaches to cabinet top with adhesive hook and loop
Typical Lead Time:	<ul style="list-style-type: none"> • 3 weeks

Note on shipping: The file cabinet will ship direct from the manufacturer via freight. The freight carrier will coordinate delivery with the customer by telephone before delivering. File cabinets will arrive on a pallet. Please specify if you are in a residential area, or if you have a loading dock that can accommodate freight. The wood top will ship from Caretta Workspace's factory.



635 Enterprise Drive
 Lewis Center, OH 43035
 Phone: 614-430-8660
www.CarettaWorkspace.com
 Made in America

Questions? Call Us!
 (877)422-1088