



Meeting Tables for Four

42" Square Meeting Table Perfect for Executive Offices

The Meeting Table for Four is a 42" square table that features a solid cherry hardwood top with a soft, durable writing surface, and wood accented metal legs with a solid cherry base. Its size and attractive style make this the perfect table for an executive office or small conference room.

The thick solid cherry wood on the table top features beautiful wood grain patterns, and a bull-nose edge and finish that are the same used in other Caretta Workspace products. This makes the table fit perfectly into any Caretta office.

For added functionality, a power and data port module can be added to the desktop. This module can be customized with power plugs, monitor connectors, data ports, or whatever technology needs are specified.

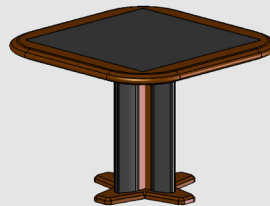
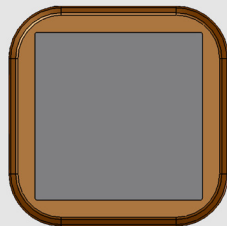
Versions:

Meeting Table for Four:

Part #: 531-0002-00-00-0

Size: H: 30" W: 42" D: 42"

Weight: 95 lbs.



Power and Data Connected Meeting Table for Four:

Part #: 531-0007-00-00-0

Size: H: 30" W: 42" D: 42"

Weight: ~95 lbs.



Meeting Table for Four



Power and Data Connected Meeting Table for Four

There are two versions of the Meeting Table for Four. One version is a table with a solid cherry top and a soft and durable writing surface. The other version adds a power and data port to the center of the table top.

- Solid Cherry Wood
- Soft Durable Inlay
- Large Leveling Feet
- Wood Accented Legs
- Optional Power/Data



The base of the table is made of solid cherry hardwood. It has four large, 2" adjustable leveling pads to keep your table stable.

Meeting Tables for Four: Features



Attractive Look

The clean lines of the Meeting Table legs with the soft bull-nose edge, premium inlay surface on the top, and solid cherry base make this table an attractive piece in any office or home. The dramatic wood grain patterns in the thick solid cherry top make each table truly unique.



Premium Solid Cherry Hardwood

The solid cherry hardwood used in the Meeting Table top is selected for its unique grain patterns, then finished with a durable, bright, natural cherry finish. Each piece goes through a detailed 10-step finish process, which is perfected with time and hand work.



Solid Cherry Base with Leveling Feet

The base of the table is made of solid cherry hardwood. It has four large, 2" adjustable leveling pads to keep your table stable.



Optional Table Top Connectivity

A connectivity module can be added to the table top that can house power plugs, USB, Ethernet, video connectors, or other connectors. The cables are hidden inside the main table leg.

Meeting Tables for Four: Photos



A **Meeting Table for Four** is the perfect companion table for an executive office.



A **Power and Data Connected Meeting Table for Four** with power and Ethernet plugs on the table top.

Meeting Tables for Four: **Photos**

Tables

Tables

Meeting Tables for Four

Meeting Tables for Four



A Caretta **Meeting Table for Four** with premium wood, bull-nose edge and soft, durable inlay.



The Caretta **Meeting Table for Four** has a solid cherry wood base.



635 Enterprise Drive
Lewis Center, OH 43035
Phone: 614-430-8660
www.CarettaWorkspace.com
Made in America

Questions? Call Us!
(877)422-1088

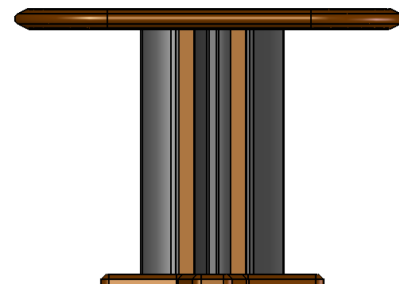
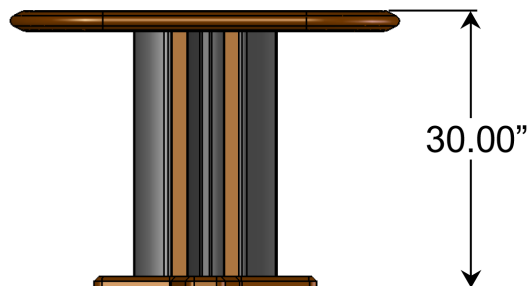
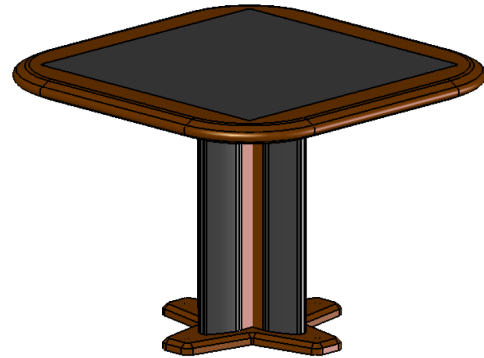
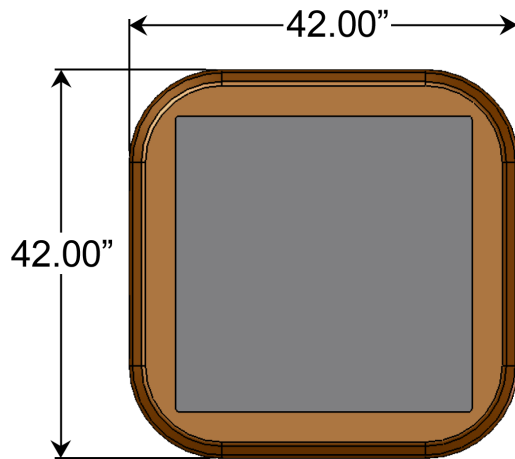
Meeting Tables for Four: Dimensions

Meeting Table for Four:

Part #: 531-0002-00-00-0

Power and Data Connected Meeting Table for Four:

Part #: 531-0007-00-00-0




Meeting Tables for Four: **Specifications**

Part Number:	<ul style="list-style-type: none"> • Meeting Table for Four: 531-0002-00-00-0 • Power and Data Connected Meeting Table for Four: 531-0007-00-00-0
Dimensions:	<ul style="list-style-type: none"> • Meeting Tables for Four: H: 30.00" W: 42.00" D: 42.00"
Weight:	<ul style="list-style-type: none"> • Meeting Tables for Four: ~95 lbs. • Weight may vary with addition of power and data ports
Table Top:	<ul style="list-style-type: none"> • Premium solid cherry hardwood frame • Hand selected for unique grain patterns • Wood source is FSC Certified • CNC manufacturing ensures precision fit joinery
Rave® Inlay Material:	<ul style="list-style-type: none"> • Material is of a quality indistinguishable from leather • Superior abrasion resistance (100,000 double rubs - Wyzenbeek/CFFA-1, Federal Standard 191A - Method 5304, wire screen) • Mildew resistant, UV stabilized pigments, light fastness/1,000 hours, antimicrobial, antibacterial • Meets: Motor Vehicle Safety Standard 302, California Tech Bulletin 117 section E, IMO A.652(16) 8.2 & 8.3, UFAC class 1, BIFMA class A, NFPA 260 class 1, may comply with Cal 133 when tested with suitable components
Wood Finish:	<ul style="list-style-type: none"> • Natural cherry finish highlights wood grain • Hand-rubbed, 10-step finish process ensures quality • Meets or exceeds Standards of National Kitchen Cabinet Mfg. Association • Low VOC, formaldehyde free • Hand work in finish process ensures high quality
Table Legs:	<ul style="list-style-type: none"> • Aluminum structure painted black • Cherry wood highlights • Solid cherry hardwood base with 2" round, adjustable levelers
Optional Power/Data Ports:	<ul style="list-style-type: none"> • Connectivity added into table top • Ports to be specified by customer • Suggestions for connectors: power plug, Ethernet, USB, video • Wires are hidden, running down the inside of the table leg
Typical Lead Time:	<ul style="list-style-type: none"> • In stock - 3 weeks



635 Enterprise Drive
 Lewis Center, OH 43035
 Phone: 614-430-8660
www.CarettaWorkspace.com
 Made in America

Questions? Call Us!
 (877)422-1088