



## Conference Tables for Six

Conference Table Perfect for Small Conference Rooms

The Conference Table for Six is a 72" x 36" table that features a solid cherry hardwood top with a soft, durable writing surface, and wood accented metal legs. Its size and attractive style make this the perfect table for an executive office or small conference room.

The thick solid cherry wood on the table top features beautiful wood grain pattern, and the same bull-nose edge and finish that are used in other Caretta Workspace products. This makes the table fit perfectly into any Caretta office.

For added functionality, a power and data port module can be added to the desktop. This module can be customized with power plugs, monitor connectors, data ports, or whatever technology needs are specified.

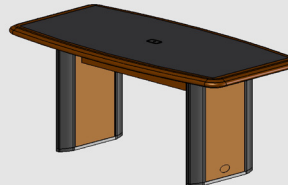
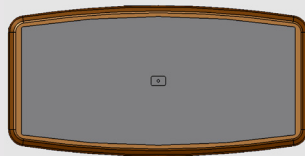
Versions:

### Conference Table for Six:

**Part #:** 531-0004-00-00-0

**Size:** H: 29.5" W: 36" D: 72"

**Weight:** 140 lbs.

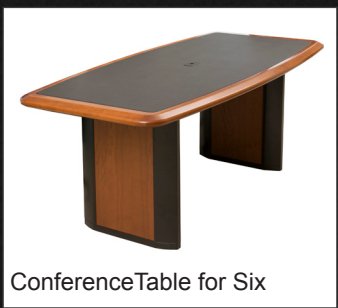


### Power and Data Connected Conference Table for Six:

**Part #:** 531-0005-00-00-0

**Size:** H: 29.5" W: 36" D: 72"

**Weight:** ~140 lbs.



There are two versions of the Conference Table for Six. One version has a solid cherry top with a soft and durable writing surface. The other version adds a power and data port to the center of the table top.

- Solid Cherry Wood
- Soft Durable Inlay
- Large Leveling Feet
- Wood Accented Legs
- Optional Power/Data



In the center of the table is a grommet that passes telephone or projector cables through the table top. This eliminates the need for cables that hang over the edge of the table.



635 Enterprise Drive  
Lewis Center, OH 43035  
Phone: 614-430-8660  
www.CarettaWorkspace.com  
Made in America

Questions? Call Us!  
(877) 422-1088

## Conference Tables for Six: Features



### Attractive Look

The clean lines of the Conference Table legs with the soft bull-nose edge and premium inlay surface on the top make this table an attractive piece in any office or home. The dramatic wood grain patterns in the thick solid cherry top make each table truly unique.



### Premium Solid Cherry Hardwood

The solid cherry hardwood used in the Conference Table top is selected for its unique grain patterns, then finished with a durable, bright, natural cherry finish. Each piece goes through a detailed 10-step finish process, which is perfected with time and hand work.



### Wire Grommet in Center of Table

In the center of the table is a grommet that passes telephone or projector cables through the table top. This eliminates the need for cables that hang over the edge of the table.



### Optional Table Top Connectivity

A connectivity module can be added to the table top that can house power plugs, USB, Ethernet, video connectors, or other connectors.

# Conference Tables for Six: Photos



A **Conference Table for Six** is the perfect table for an executive office or small conference room.



A **Power and Data Connected Conference Table for Six** with power and Ethernet plugs on the table top.

Tables


Tables

Conference Tables for Six

Conference Tables for Six



635 Enterprise Drive  
 Lewis Center, OH 43035  
 Phone: 614-430-8660  
[www.CarettaWorkspace.com](http://www.CarettaWorkspace.com)  
 Made in America

Questions? Call Us!  
 (877)422-1088

# Conference Tables for Six: Photos

Tables

Tables

Conference Tables for Six

Conference Tables for Six




A Caretta **Conference Table for Six** with premium wood, bull-nose edge and soft durable inlay.



The Caretta **Conference Table for Six** is a boat-shaped table.



635 Enterprise Drive  
 Lewis Center, OH 43035  
 Phone: 614-430-8660  
[www.CarettaWorkspace.com](http://www.CarettaWorkspace.com)  
 Made in America

Questions? Call Us!  
 (877)422-1088

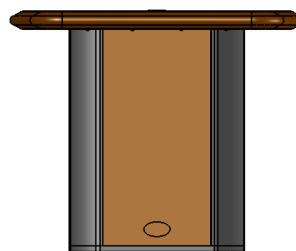
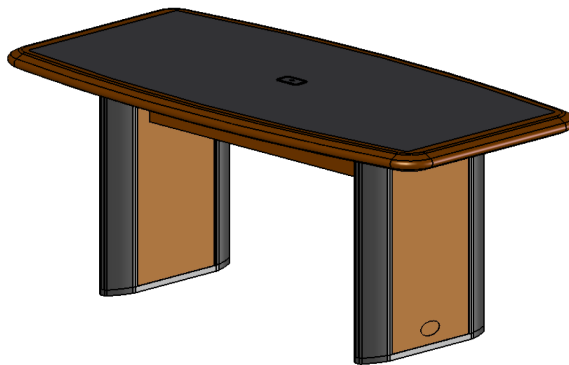
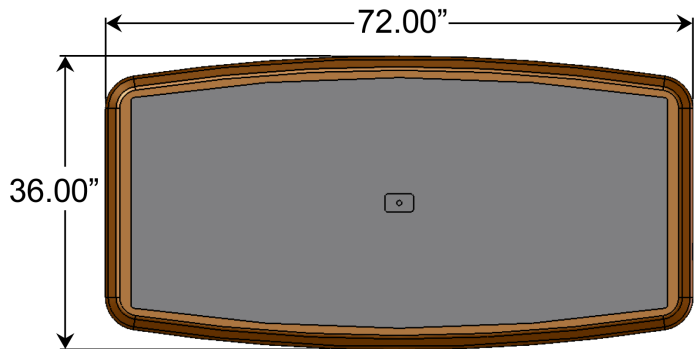
# Conference Tables for Six: Dimensions

## Conference Table for Six:

Part #: 531-0004-00-00-0

## Power and Data Connected Conference Table for Six:

Part #: 531-0005-00-00-0



Tables


Tables

Conference Tables for Six

Conference Tables for Six



635 Enterprise Drive  
 Lewis Center, OH 43035  
 Phone: 614-430-8660  
[www.CarettaWorkspace.com](http://www.CarettaWorkspace.com)  
 Made in America


Questions? Call Us!  
 (877)422-1088

## Conference Tables for Six: **Specifications**

Part Number:	<ul style="list-style-type: none"> <li>• Conference Table for Six: 531-0004-00-00-0</li> <li>• Power and Data Connected Conference Table for Six: 531-0005-00-00-0</li> </ul>
Dimensions:	<ul style="list-style-type: none"> <li>• Conference Tables for Six: H: 29.50" W: 36.00" D: 72.00"</li> </ul>
Weight:	<ul style="list-style-type: none"> <li>• Conference Tables for Six: ~140 lbs.</li> <li>• Weight may vary with addition of power and data ports</li> </ul>
Table Top:	<ul style="list-style-type: none"> <li>• Premium solid cherry hardwood frame</li> <li>• Hand selected for unique grain patterns</li> <li>• Wood source is FSC Certified</li> <li>• CNC manufacturing ensures precision fit joinery</li> <li>• Wire grommet located in center of table</li> </ul>
Rave® Inlay Material:	<ul style="list-style-type: none"> <li>• Material is of a quality indistinguishable from leather</li> <li>• Superior abrasion resistance (100,000 double rubs - Wyzenbeek/CFFA-1, Federal Standard 191A - Method 5304, wire screen)</li> <li>• Mildew resistant, UV stabilized pigments, light fastness/1,000 hours, antimicrobial, antibacterial</li> <li>• Meets: Motor Vehicle Safety Standard 302, California Tech Bulletin 117 section E, IMO A.652(16) 8.2 &amp; 8.3, UFAC class 1, BIFMA class A, NFPA 260 class 1, may comply with Cal 133 when tested with suitable components</li> </ul>
Wood Finish:	<ul style="list-style-type: none"> <li>• Natural cherry finish highlights wood grain</li> <li>• Hand-rubbed, 10-step finish process ensures quality</li> <li>• Meets or exceeds Standards of National Kitchen Cabinet Mfg. Association</li> <li>• Low VOC, formaldehyde free</li> <li>• Hand work in finish process ensures high quality</li> </ul>
Table Legs:	<ul style="list-style-type: none"> <li>• Aluminum structure painted black</li> <li>• Cherry wood highlights</li> <li>• Legs each have two 3" round, adjustable levelers</li> </ul>
Optional Power/Data Ports:	<ul style="list-style-type: none"> <li>• Connectivity added into table top</li> <li>• Ports to be specified by customer</li> <li>• Suggestions for connectors: power plug, Ethernet, USB, video</li> </ul>
Typical Lead Time:	<ul style="list-style-type: none"> <li>• In Stock - 3 weeks</li> </ul>
Shipping:	<ul style="list-style-type: none"> <li>• Due to the size of the table top, this table cannot ship UPS</li> <li>• Contact Caretta for shipping options and rates</li> </ul>



635 Enterprise Drive  
 Lewis Center, OH 43035  
 Phone: 614-430-8660  
[www.CarettaWorkspace.com](http://www.CarettaWorkspace.com)  
 Made in America

Questions? Call Us!  
 (877)422-1088